



#HorizonEU

THE EU RESEARCH & INNOVATION PROGRAMME

2021 – 2027

HENRIETTE VAN EIJL

Head of Unit
DG RTD.D3, Health and Societal Transitions

SSH Integration in Horizon Europe

Brussels, 8.12.2023

SSH INTEGRATION IN HORIZON EUROPE

1. Overview of the current situation
2. Looking at the future



Social Sciences and Humanities in Horizon Europe

1. Legal framework

- **Regulation (EU) 2021/695 establishing Horizon Europe (28 April 2021)**
Article 7 – Principles of the Programme

‘The Programme shall ensure a multidisciplinary approach and shall, where appropriate, provide for the integration of Social Sciences and Humanities - SSH across all clusters and activities developed under the Programme, including specific calls for proposals on SSH related topics.’

- **Council Decision (EU) 2021/764 establishing the Specific Programme implementing Horizon Europe (10 May 2021)**
Article 2.f – Operational objectives

‘To increase collaboration links in European R&I and across sectors and disciplines, including social sciences and humanities’

Social Sciences and Humanities in Horizon Europe 2/3

2. Calls for proposals - Work programme

- Topics flagged for SSH during the co-creation and drafting process
- Standard sentence included in the Scope of the SSH flagged topics:

'This topic requires the effective contribution of social sciences and humanities (SSH) disciplines and the involvement of SSH experts, institutions as well as the inclusion of relevant SSH expertise, in order to produce meaningful and significant effects enhancing the societal impact of the related research activities.'

3. Proposal submission

- SSH aspects in submission forms:
 - in Part A, administrative information – checkbox for SSH and profile of Participants
 - in Part B, description of work – SSH in excellence, implementation and impact sections
- Freedom of the applicants: to consider that **an SSH component is not relevant** for their proposal - **Need to justify why not** for evaluators to assess.

4. Proposal evaluation

- SSH is a requirement embedded in the award criteria that will be assessed.
- SSH experts evaluators assess specifically the SSH part of the proposal, taking into account how applicants have integrated the SSH dimension in the proposal.

Social Sciences and Humanities in Horizon Europe 3/3

5. Outputs of the projects

- Specific issues to be addressed in the Midterm and Final reports by Consortia
- Precise questions to be addressed in the assessment report by Project Officers and/or External Reviewers

Is the project adequately integrating social sciences or/and humanities?

Yes/No/Partially/Not applicable

Assess if the project has adequately engaged in an effective integration of SSH such as outlined in the DoA. If only partially or not at all, does the project provide an acceptable justification and corrective measures?

6. Monitoring and communication

7. Bottom-up actions

SSH INTEGRATION IN HORIZON EUROPE

Looking at the future



Partnerships under Horizon Europe

Legal basis:

Horizon Europe Regulation

- **Article 2** - definition
- **Article 10** – EU involvement and its three forms: institutionalised, co-funded and co-programmed
- **Annex III** – selection, implementation and monitoring criteria

Technology areas:

1. **Medicine / pharma**
2. Data and IT
3. Communication
4. Computing
5. Autonomous technologies
6. Cybersecurity
7. Energy
8. Farming / food
9. Space
10. Circularity
11. **Social science**
12. Transport
13. Biomaterials
14. Materials

Selection criteria:

Effectiveness - achieving the objectives and impacts of the Programme

Coherence and synergies with the EU R&I landscape

Transparency & openness - identification of priorities and objectives, involvement of partners & stakeholders from the entire value chain, backgrounds & disciplines

Ex-ante demonstration **additionality and directionality**

Ex-ante demonstration partners' **long-term commitment**

Assessing European partnerships against European policy priorities

Developing and illustrating a methodology for assessing the relevance of European Partnerships as instruments to address current and future European policy priorities



Draft Proposal for new Horizon Europe Partnerships

Cluster 2 Partnerships

- Social Transformations and Resilience

The Partnership will create a transformative R&I programme between SSH to enable inclusive sustainable development and social and economic resilience in the light of changes in climate, technology, demography and global trade patterns, and Potential unexpected shocks. It will develop knowledge and tools to address contemporary multifaceted social challenges in a collaborative and systematic way.

- Resilient Cultural Heritage

The Partnership will strengthen the means of preserving Europe's cultural heritage (CH) and contribute to climate neutrality in other sectors by bringing forward traditional and innovative practices, techniques and materials resulting from CH research. It is proposed to draw on traditional - as well as emerging - skills, techniques and materials to provide innovative solutions, assessment systems and mitigation strategies along with risk management models for cost-effective preservation of CH assets in times of climate change and related risks. The partnership will support CH needs-based research and innovation and contribute to the European Green Deal by proposing to translate scientific outcomes into new policies for resilience and sustainability in various industries.

Cluster 1 Partnership

- Brain Health

The Partnership will accelerate the delivery of preventive, diagnostic, therapeutic and care solutions to foster brain health in citizens and patients, including through a better understanding of the functioning of the brain and by strengthening the alignment and synergies across European and global brain health research initiatives.



Evaluation study of the EU Framework Programmes for Research and Innovation for a Resilient Europe – initial findings for CL2

Feedback from the Open Public Consultation

- **Added value of the Cluster acknowledged by large consensus of beneficiaries:**
 - cross-sectoral nature, multidisciplinary and geographical coverage
 - financial support often exceeding other programmes at national and EU levels
 - SSH research outside of Horizon Europe often does not compare to it in terms of consortium size, project scope and duration
- **Rising numbers** of practice-oriented participants such as trade unions, vocational and educational training organizations and NGOs representing citizens and end-users.
- **Potential for increased synergies with Clusters 1, 3 and 4 for example on:**
 - human-centred prevention and care, gender inequalities in healthcare and confirm the role of the arts and culture for health and well-being
 - interaction with AI, robotics and big data, with citizens and for socio-economic aspects of the digital transition

Evaluation study of the EU Framework Programmes for Research and Innovation for a Resilient Europe – initial findings for CL2

Feedback from the Open Public Consultation

- **Social Sciences and Humanities enablers** to place the EU at the forefront of harmonizing digital technologies and to align with fundamental rights and civil liberties.
- **Several CL2 call topics** address **digital solutions and cutting-edge technologies**.

Food for thoughts

'There are great vistas to which science alone can lead, and they make for elevation of mind.'

The opposition between science and feeling is largely a misunderstanding.

As one of our philosophers has remarked, science is in a true sense 'one of the humanities.'

Sir John Arthur Thomson

J. Arthur Thomson (ed.), *The Outline of Science: A Plain Story Simply Told* (1921/2), Vol. 2, Science and Modern Thought, 787.

SSH INTEGRATION IN HORIZON EUROPE

Background, documents and references



Proposal evaluation

SSH aspects

All 3 evaluation criteria include SSH aspects to be addressed



Excellence

For topics indicating the need for the integration of social sciences and humanities, is the role of these disciplines properly addressed?



Impact

Are the proposed dissemination, exploitation and communication measures suitable?



Implementation

Does the consortium match the project's objectives, and bring together the necessary disciplinary and inter-disciplinary knowledge?

For topics flagged as SSH relevant, does the consortium include expertise in social sciences and humanities?

Training of independent experts evaluators

<https://ec.europa.eu/info/funding-tenders/opportunities/portal/screen/support/videos>

- General briefing for experts
- Dedicated webinar for experts on how to handle SSH
- Composition of experts consensus groups and panels

The screenshot shows the top navigation bar of the European Commission website. On the left, there is the European Commission logo and the text "European Commission | Funding & tender opportunities | Single Electronic Data Interchange Area (SEDIA)". On the right, there is a language selector set to "English" and two buttons: "Register" and "Login". Below the navigation bar, there is a dark blue menu with a home icon and the following items: "SEARCH FUNDING & TENDERS", "HOW TO PARTICIPATE", "PROJECTS & RESULTS", "WORK AS AN EXPERT", "SUPPORT" (highlighted in yellow), and "Get started" with an information icon. The main content area is divided into four columns. The first column on the left is a light grey box with a play button icon and the text "Support videos". The second and third columns each contain a video thumbnail with the title "How to appoint a Legal / Financial Signatory in the Funding & Tenders Portal". The fourth column contains a video thumbnail with the title "How to evaluate Social Sciences & Humanities (SSH)".

European Commission | Funding & tender opportunities | Single Electronic Data Interchange Area (SEDIA)

English EN

Register Login

SEARCH FUNDING & TENDERS HOW TO PARTICIPATE PROJECTS & RESULTS WORK AS AN EXPERT SUPPORT Get started

Support videos

Funding & Tenders Portal

How to appoint a Legal / Financial Signatory in the Funding & Tenders Portal

Funding & Tenders Portal

How to appoint a Project Legal / Financial Signatory in the Funding & Tenders Portal

HORIZON EUROPE EXPERTS

How to evaluate Open Science

HORIZON EUROPE EXPERTS

How to evaluate Social Sciences & Humanities (SSH)

How to evaluate Social Sciences and Humanities in Horizon Europe proposals

Monitoring SSH

- Horizon 2020 programme – interim evaluation

https://research-and-innovation.ec.europa.eu/knowledge-publications-tools-and-data/publications/all-publications/interim-evaluation-horizon-2020-key-documents_en

- Horizon 2020 - final evaluation in preparation

https://ec.europa.eu/info/law/better-regulation/have-your-say/initiatives/13444-Horizon-2020-programme-final-evaluation_en

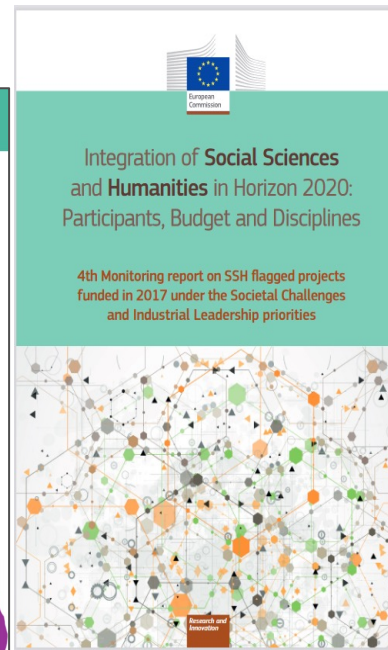
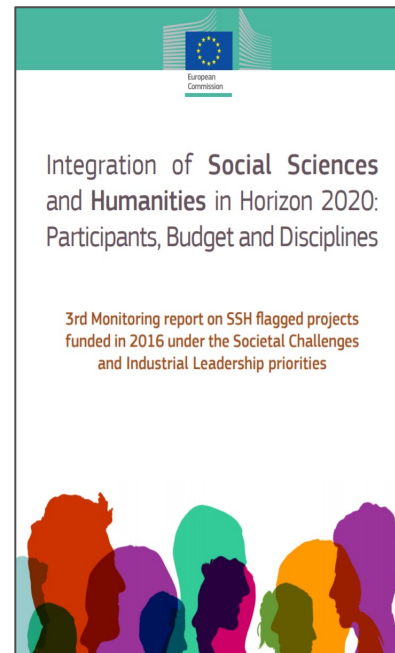
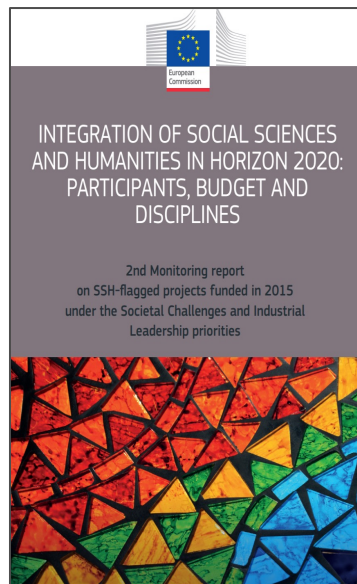
- Horizon Europe – interim evaluation in preparation

https://ec.europa.eu/info/law/better-regulation/have-your-say/initiatives/13460-Horizon-Europe-interim-evaluation_en

- Specific Monitoring Reports – next slide

Specific SSH Monitoring reports H2020 SSH-flagged topics from 2014 until 2020

<https://op.europa.eu/en/publication-detail/-/publication/4f198f8e-4599-11eb-b59f-01aa75ed71a1/language-en/format-PDF/source-183013539>



Horizon Europe Partnerships

- Co-funded and co-programmed European Partnerships under the second Horizon Europe Strategic Plan – Draft concept papers for proposed candidate partnerships - **information of July 2023, subject to change!**

https://research-and-innovation.ec.europa.eu/system/files/2023-07/ec_rtd_candidate-list-european-partnerships.pdf

- Information on the financial management of European partnerships, guidelines on SRIA development, etc, outcomes of the recently held ***European Partnership Stakeholder Forum 2023 – from idea to impact.***

www.era-learn.eu



Thank you!

HorizonEU

<http://ec.europa.eu/horizon-europe>



© European Union 2021

Unless otherwise noted the reuse of this presentation is authorised under the [CC BY 4.0](https://creativecommons.org/licenses/by/4.0/) license. For any use or reproduction of elements that are not owned by the EU, permission may need to be sought directly from the respective right holders.

Image credits: © ivector #235536634, #249868181, #251163013, #266009682, #273480523, #362422833, #241215668, #244690530, #245719946, #251163053, #252508849, 2020. Source: Stock.Adobe.com. Icons © Flaticon – all rights reserved.