

# President's Report EASSH 2024 and future planning

EASSH General Assembly, 5 December 2024

*Silvana Colella, Jon Deer, Gabi Lombardo, Maribel Glogowski, Eleanor Smith*



# Overview

## Part A: 2024 activities

1. 2024 overview in numbers (Membership, Communications, etc.)
2. Policy work (Framework programmes, CoARA, etc.)

## Part B: Future planning

1. SSH hub (data, collaboration, etc.)
2. FP10
3. Visibility, discoverability and research evaluation



# Part A: 2024 activities

2024 in numbers

Policy work



# Overview of activities (January-October)

- ▶ **6 events** organised or co-organised by EASSH, both in-person and online
- ▶ **7 Reports and position papers** (edited or co-edited)
- ▶ **33 presentations at conferences or workshops** (with the support of Board members)
- ▶ Over **200 personal meetings** online and/or in person with representatives of European or national institutions

Target for 2024: 4 events




# Membership

## 11 new members in 2024

- ▶ Cultural Studies of Science and Technology Group, ETH Zurich
- ▶ Faculty of Social Sciences and Humanities, Aalborg University
- ▶ Masaryk University
- ▶ Sorbonne Nouvelle
- ▶ Trinity College Dublin
- ▶ Turku University of Applied Sciences
- ▶ University of Antwerp
- ▶ Università per Stranieri di Siena
- ▶ University of Salamanca
- ▶ University of Turku
- ▶ University of Vienna

In total: **75 members** at the end of 2024



Target for 2024: 3 to 5 new members

## New members from 2025 (confirmed)

- ▶ OPERAS
- ▶ NORCE



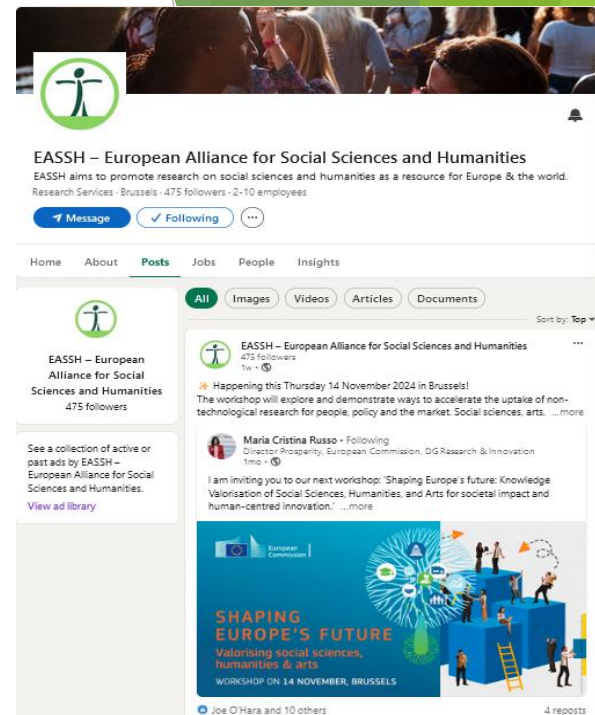
# Communications in numbers

- > 8,000 visits to the website (+10.5% compared with 2023)
- > 19,000 pageviews (+14.2%)
- > 700 downloads of position papers (+17.5%)
- > 210 newsletter subscribers (+25% increase vs. aim of +5% increase!)

## Social Media: LinkedIn (launched October 2023)

- ▶ > 480 followers (500% increase vs. aim of 50%)
- ▶ 11,868 impressions
- ▶ 771 page views
- ▶ Best performance posts:
  - ▶ Research evaluation workshop in February
  - ▶ Position Paper on #SSH integration analysis (FP10)

X: no longer a priority channel (analytics no longer available)




# Events and webinars


1. R&I for a Fair Green and Digital transition – Webinar (February) - EASSH data analysis to inform policymakers
2. Research Evaluation – Workshop (February)
3. ESFRI Landscape Analysis – SSH section (May)
4. Stronger Together: Belgian Presidency Conference (May)
5. Global Perspectives on Supporting Research Translation – Webinar (July)




## Global Perspectives on Supporting Research Translation

Webinar

 **Date**  
Wednesday, 5 June 2024

 **Time**  
14:30 CEST

 **Location**  
Online



**EASSH**  
European Association  
of Science and Society



European Infrastructure  
for translational medicine



**Taylor & Francis**  
Taylor & Francis Group



# Reports and position papers (2024)

1. R&I for a fair green transition (January)
2. R&I for a fair digital transition (January)
3. Research evaluation Workshop - Report (April)
4. Monitoring SSH integration still matters – Position paper (April)
5. SSH integration analysis: A research-on-research approach (October)
6. **Prosperous and competitive Europe: A truly interdisciplinary FP10 – Joint position paper (December 2nd)**
7. 2 co-edited reports:
  - a. Higher Education Policy Institute, Advancing Translational Research (November)
  - b. Stronger together: Conference report (forthcoming)



## Position Papers

SSH Integration

**SSH integration analysis: A research-on-research approach to EU framework programmes**

2024-10-09

Monitoring integration is an important obligation for the Framework Programme to deliver truly interdisciplinary programmes.

[Download paper \(pdf\)](#)

SSH Integration

**Monitoring SSH integration still matters**

2024-04-25

This EASSH position paper is a reflection on the Final Monitoring Report on the Integration of SSH in H2020. We have endeavoured to improve the integration of SSH in Horizon Europe thanks to the evidence, data, and analysis that both the European Commission and EASSH developed during the implementation of Horizon 2020.

[Download paper \(pdf\)](#)

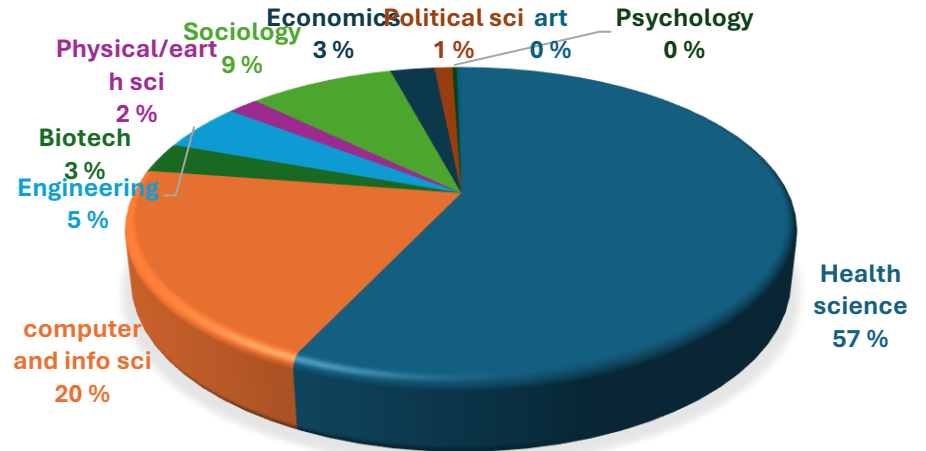
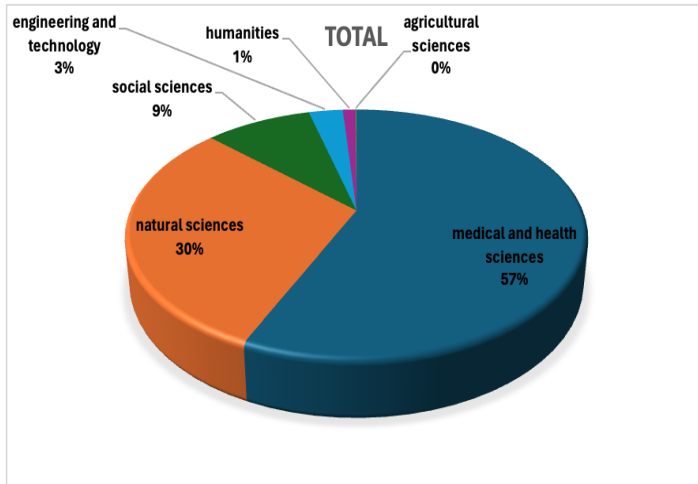


# Horizon Europe interim evaluation

- **Belgian Presidency conference “#StrongerTogether: SSAH and the future of evidence-informed policymaking”** (thanks to N4S. Aarhus, Antwerp Unis)
  - ✓ EASSH Session on “Providing evidence for funders/science policymakers: How to balance societal, research and policy needs”(May 2024)
- **Publication of two position papers:**
  - ✓ Monitoring SSH integration still matters (April 2024)
    - *focus on methodologies*
  - ✓ SSH integration analysis: A research-on-research approach to EU framework programmes (October 2024) - Raf Guns (University of Antwerp) and Jon Deer (City, University of London)
    - *focus on preliminary dataset*
- **Position paper in the pipeline**→ *SSH integration analysis: Data from all Horizon Europe clusters (2025)*

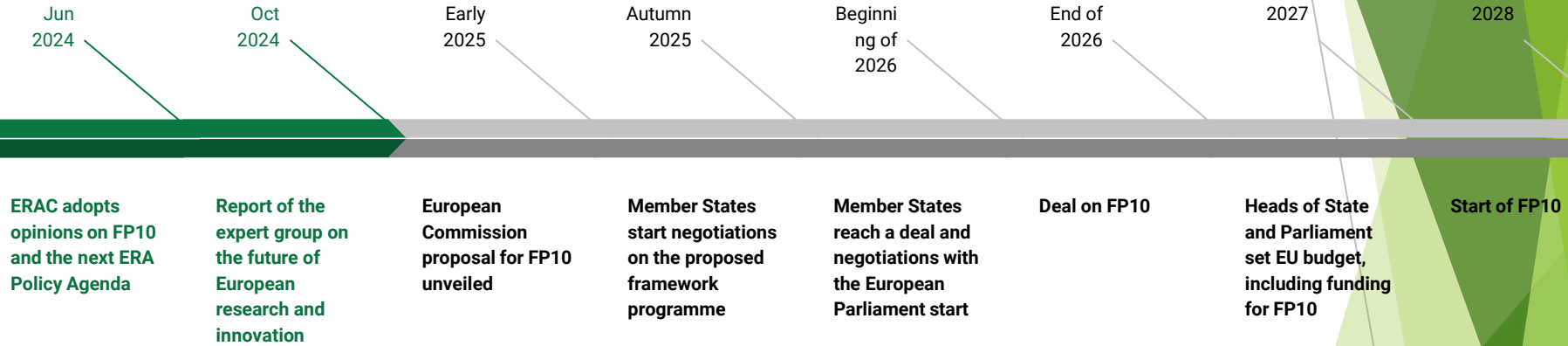


# H2020 and Horizon Europe in comparison: Health



\*Scivoc Data

# FP10 - provisional timeline





# EASSH FP10 activities in 2024

**Inputs to expert group** report “Align, act, accelerate - Research, technology and innovation to boost European competitiveness” – (position papers, informal notes, two meetings with one member of the HLG)

**Joint position paper** “Prosperous and competitive Europe: A truly interdisciplinary FP10” (December 2024)



# FP10 campaigning: Research Matters

**RESEARCHMATTERS**  
*Increase funding to solve Europe's challenges*

Home Why Research Matters ▾ Partners ▾ Participate About

**INVEST IN RESEARCH & INNOVATION  
FOR EUROPE'S FUTURE**

Open letter

About the campaign

**#RESEARCHMATTERS**

**INVEST IN THE FUTURE**

A call for increased investments  
in research and innovation

[View the recording of our Brussels event on the next EU budget for R&I here](#)

## WE CALL FOR

- Increased funding for research and development (R&D), reaching over 3% of GDP in the EU and all European countries
- Doubling the budget for the EU's next research programme, FP10, and protecting that budget by ring-fencing it.

**ASSH**

# Coalition for Advancing Research Assessment (CoARA)

EASSH involved in →

- ▶ **Working Group on “Multilingualism and language biases in research assessment”** (represented by the European Language Council)
- ▶ **Working Group on "Transdisciplinarity, Applied/Practice-Based Research, and Impact"** (subgroup on social impact)
- ▶ **Working Group on “Ethics and Research Integrity Policy in Responsible Research Assessment for Data and Artificial Intelligence”**
- ▶ **EASSH co-leads**, with the European Network for Research Evaluation in the SSH (**ENRESSH**) and the Federation of Finnish Learned Societies (TSV) Working Group on **“Evaluating Social Sciences and Humanities research globally”**



# EASSH in Expert groups

- ▶ **ESFRI – stakeholders forum** (session on SSH in the Landscape Analysis May 2024)
- ▶ **ERA Forum:** EASSH contributes to the following subgroups
  - ▶ Inclusive Gender Equality in ERA(Erasmus Uni Rotterdam)
  - ▶ Global Approach for R&I Cooperation
- ▶ **Expert group for the drafting of Generative AI Guidelines (June 2024)**
- ▶ **EU partnerships**
  - ▶ Scientific Board of the CSA BrainHealth – to prepare the research strategy of the European partnership
  - ▶ Collaboration with the Sustainable Blue Economy Partnership - Associate Partner
  - ▶ Support for the approval of 2 SSH-led partnerships



# Part B: Future planning

EASSH plan 2025 and beyond





# Main commitments for 2025

- ▶ Interim evaluation: data analysis of HE
- ▶ Activities for CoARA Working Group “Evaluating SSH research globally”
- ▶ FP10: SSH contribution for the future (priorities and structure)
- ▶ European partnerships: SBEP, Brain Health and support to the two SSH partnerships (Resilience and Cultural Heritage)
- ▶ ERA Forum
- ▶ EASSH business developments



# Interim evaluation 2025: SSH integration in Horizon Europe

## Planned activities:

- ▶ Position papers:
  - ▶ SSH integration analysis: Data from all HE clusters (2025)
  - ▶ Societal Readiness - a pilot in Cluster 5 analysis of results
  - ▶ Evaluation strategies: identify bottlenecks and successful stories
  - ▶ Position Paper on SSH in the competitiveness fund (if confirmed)
- ▶ Events:
  - ▶ A data observatory for SSH: analysing funding



# CoARA Working Group “Evaluating SSH research globally” - Plan: 5 Task groups

1. TG1. landscape of Action Plans and WGs
2. TG2. Theory of evaluation:
3. TG3. ENRESSH principles and recommendations and their implementation.
4. TG4. review of national evaluation systems,
5. TG5. peer review
6. Coordination group



# Advocacy for SSH in FP10

- ▶ A new European Commission team starts mandate on 1 December 2024
- ▶ Continuing work with partners signatories of the joint position paper
- ▶ SSH research priorities for FP10
- ▶ Case studies: Innovative SSH
- ▶ Modernise Evaluation
- ▶ Open Science, visibility and discoverability of research (with EASSH members) - events, and reports
- ▶ Events with MEPs (provisional contacts with 6 MEPs and proposal for a STOA meeting)



# ERA Forum: EASSH one of 14 Stakeholders

Subgroups EASSH supports/contributes:

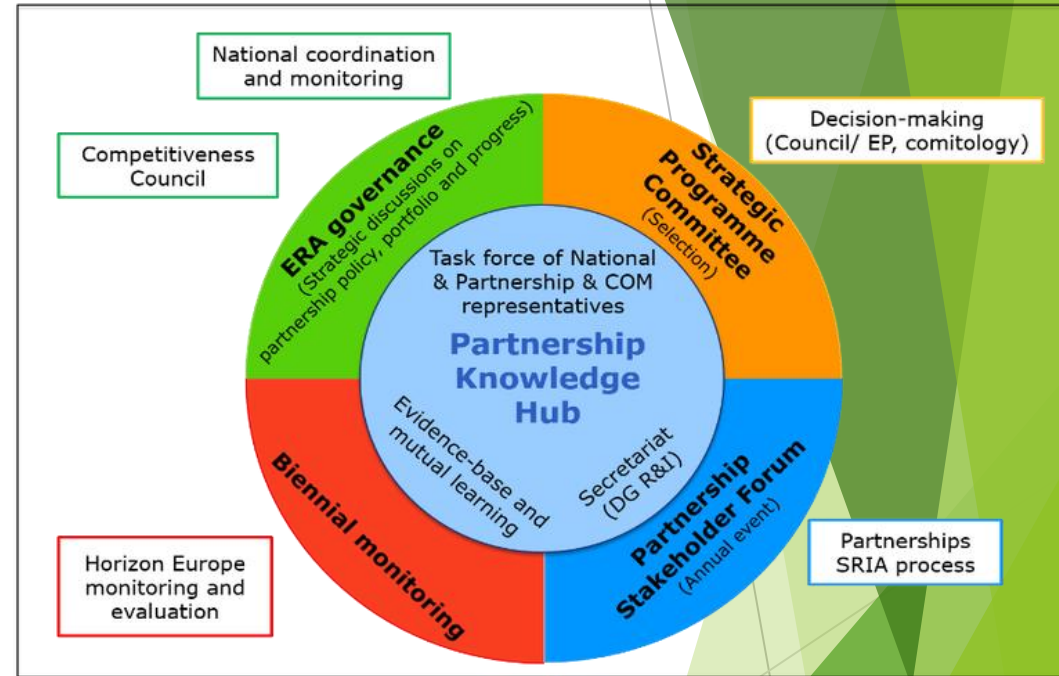
- ▶ Global Approach to R&I Cooperation
- ▶ Inclusive Gender Equality in ERA (Erasmus Univ Rotterdam)
- ▶ [Generative AI guidelines](#) (City University London)

New ERA policy Agenda under development with the new European Commission



# European Partnerships

- ▶ Strategic Research and Innovation Agenda (SRIA) for Sustainable Blue Economy Partnerships and Brain Health Partnership
- ▶ Sustainable Blue Economy Partnerships: full partner with specific tasks
- ▶ Partnership Knowledge Hub Forum - Build a portfolio of partnerships
- ▶ Social Platform: informing Member States of emerging SSH priorities (with external funding)
- ▶ EASSH members to contribute to the design of the two SSH-driven partnerships:
  - ▶ Resilient Cultural Heritage
  - ▶ Social Transformation and Resilience (EERA)
- ▶ Other interesting partnerships are:
  - ▶ Virtual worlds
  - ▶ Textile of the future



# SSH hub and a social platform

The project has four main objectives:

- Significantly improve the integration of SSH research;
- Overview of research programmes (public and private RFOs) to integrate SSH expertise;
- Inform science policy makers and funders to promote SSH integration;
- Create an Observatory of SSH, data hub (emerging topics in SSH research, use of topic and policy relevant taxonomies),



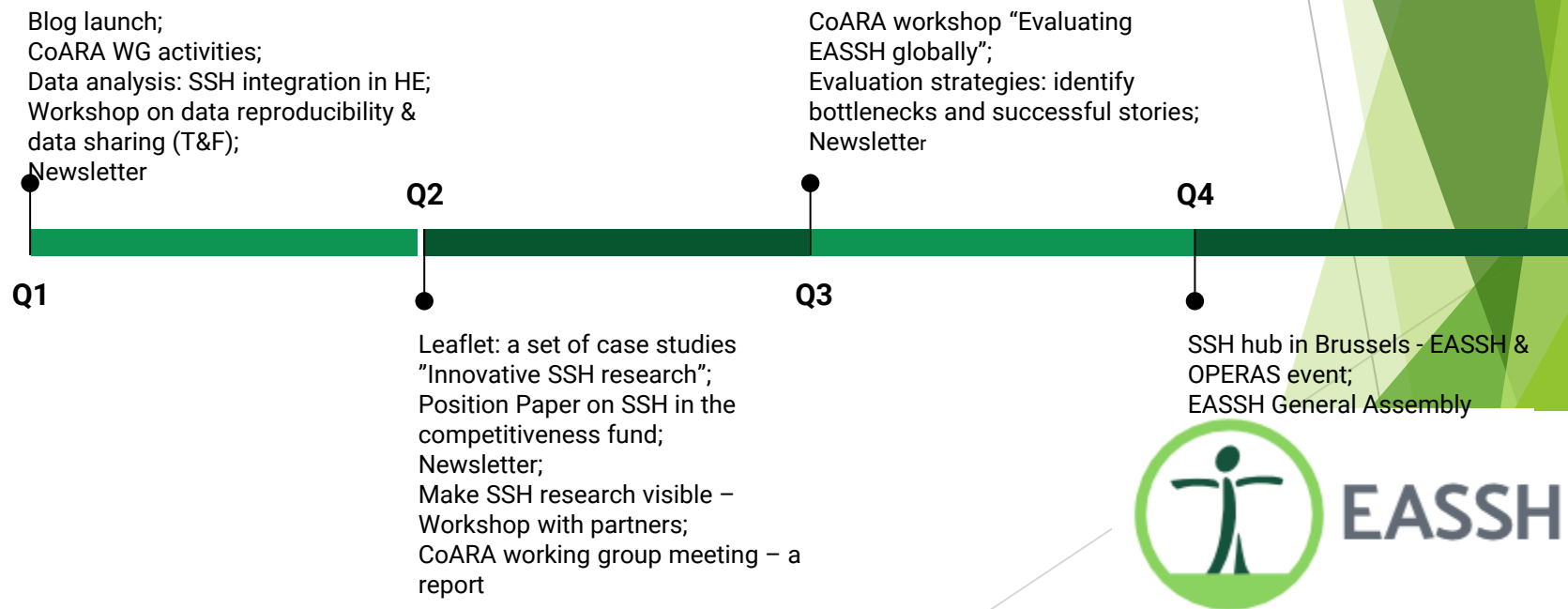
# EASSH business developments

- ▶ A new office
- ▶ Open opportunities to hire in Belgium - administrative changes
- ▶ Update of financial regulations and statutes
- ▶ EASSH blog
- ▶ Revamp of website
- ▶ Invest in Client Management System (CMS)





# EASSH calendar 2025



# Philippe Keraudren Mobility Fellowship Call for applications 2025

**Raise  
awareness in  
your  
organisation!!**

- For member organisations who would like to work more closely with EASSH
- Objectives:
  - To provide EASSH members with direct insight into the dynamics of science policy at a European and national level
  - To offer EASSH members the opportunity to work closely with the EASSH secretariat and to engage with the "Brussels bubble"
- Modalities
  - Duration: 6 months to a year
  - Location: Brussels
  - The fellow will continue to work for their organisation for 50% of their time and support the work of EASSH in Brussels for the remainder.

Further information: <https://eassh.eu/Thematic/Calls/Philippe-Keraudren-Mobility-Fellowship>



# Thank you!

EASSH Team

