



President's Report EASSH 2025 and future planning

EASSH General Assembly, 11 December 2025

Joe O'Hara, Jon Deer, Gabi Lombardo, Maribel Glogowski, Alexander Hasgall, Camille Dubrocq, Nikos Kastrinos, Eleanor Smith, Daniel Øien

Overview

Part A: 2025 activities

- 2025 overview in numbers (Membership, Communications, etc.)
- Governing Board members
- Policy work (Framework programmes, CoARA, etc.)

Part B: Future planning

- FP10 Negotiations
- SSH Integration
- Calls for Action
 - European partnerships
 - SSH hub (data, collaboration, etc.)
 - Visibility, discoverability and research evaluation



Part A: 2025 activities

2025 in numbers

Policy work

2025 Activities

- 3 position papers, 1 joint MCSA statement,
- 1 policy brief on AI in science
- 4 Consultations responses (AI in science, Innovation Act, MFF and Science Diplomacy)
- 1 proposal application (not for EU funding)
- Events:
 - 4 EASSH Meets the Members
 - 4 CoARA meetings
 - 1 Joint conference Beyond the Algorithm: From Research to Action for Democratic Renewal
 - 1 Conference support European R&I for enhanced Competitiveness
 - 1 support to Danish Presidency Human Values & Grand Challenges



EASSH Governing Board renewal

Elected members, College of Founders

- Joe O'Hara – EASSH President
- Jon Deer – EASSH Treasurer
- Ilse Derluyn
- Jennifer Edmond
- Murray Pittock
- Maddalena Rusconi
- Jean Pierre Bourgouin

New members from December 2025:

Angela Liberatore, Jantine Schuit, Tobias Bade Strøm

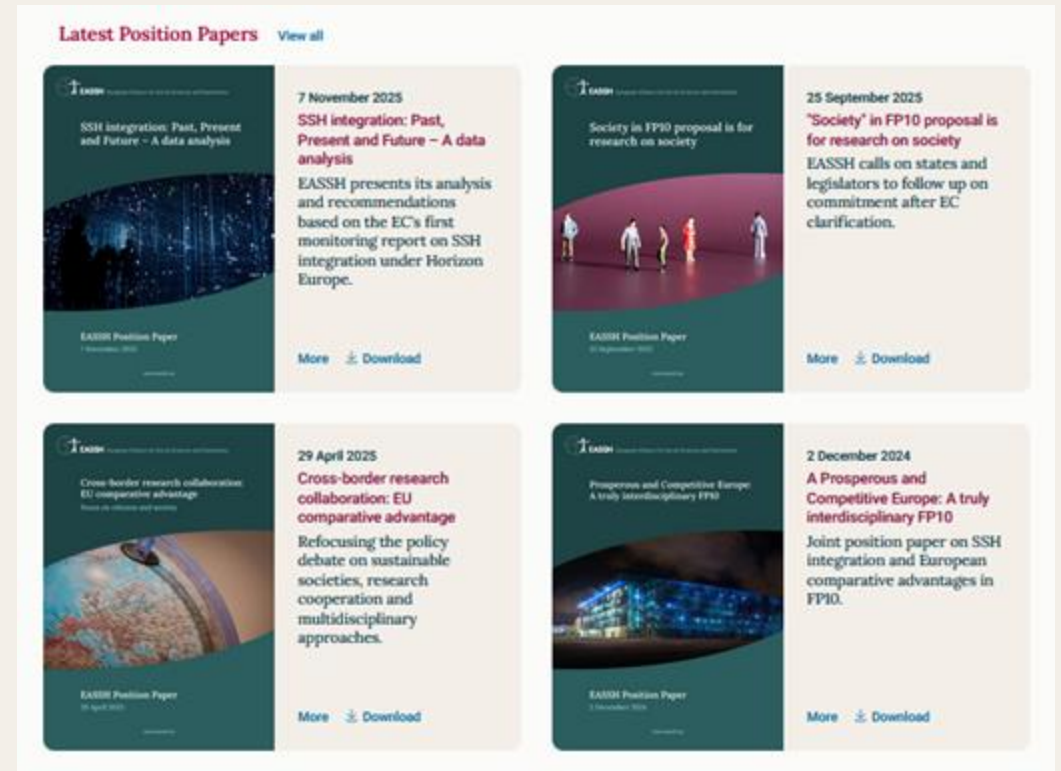
Events and webinars

- About 30 speaking engagements
- Over 60 invitations to private meetings
- EASSH in 7 advisory/steering board meetings
- Over 150 meetings with policymakers, science advisers, researchers and civil society



EASSH Position papers

1. SSH integration: Past, Present and Future – A data analysis (November 2025)
2. "Society" in FP10 proposal is for research on society (September 2025)
3. Cross-border research collaboration: EU comparative advantage (April 2025)
4. A Prosperous and Competitive Europe: A truly interdisciplinary FP10 (December 2024)





Membership

In total: **70 members** at the end of 2025

3 new members in 2025

- ▶ OPERAS
- ▶ NORCE
- ▶ Tromsø University



New members from 2026 (expression of interest)

Paris 8
Harokopio University, Athens
Panteion University, Athens
E-RHIS – European Research
Infrastructure for Heritage Science
British Association of American
Studies
SWPS University, Warsaw
Aston University, Birmingham
Mykolas Romeris University, Vilnius

Communications in numbers (1/2)

> 7,600 visits to the website (-14.7% but **+59.5%** unique visitors compared with 2024)

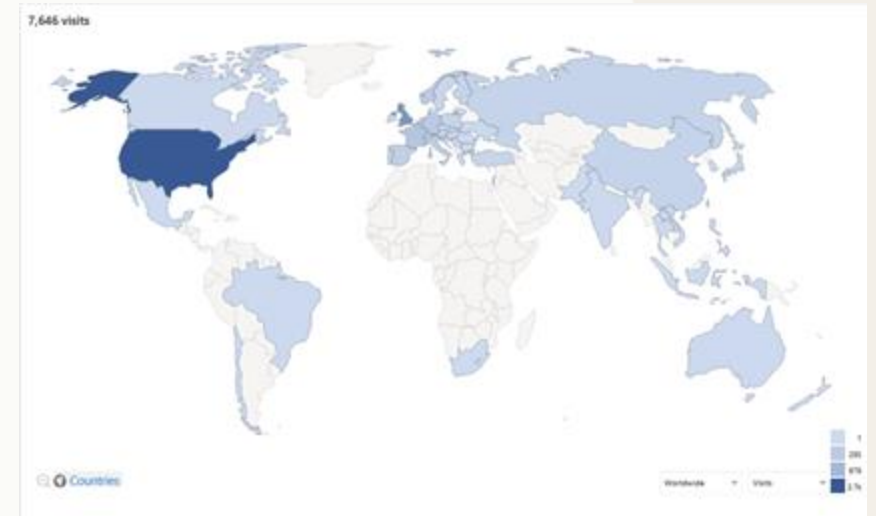
> 118 max actions in one visit (+63.9%)

> 700 downloads of position papers (+17.5%)

81 total searches on website

(100% increase, new feature)

221 newsletter subscribers (5% increase)



Our communications activities are bearing fruit: steady visits & more actions on the website, increased download of papers and number of subscribers to the newsletter. Our LinkedIn account has seen an 137% increase in followers and growing engagement.

Communications in numbers (2/2)

Social Media

LinkedIn (2 years of existence)

- > 1,100 followers (**137% increase**)
- > 18,301 impressions (54% increase)
- > 512 reactions
- Best performance posts:
 - **Meet the new EASSH President: Professor Joe O'Hara** (1,467 impressions & 11% engagement rate)
 - **Why European Social Sciences and Humanities Advocacy Matters | Public Humanities** (1,276 impressions & 7.3% engagement rate)
 - **Society in FP10 proposal is for research on society** (1,140 impressions & 6.6% engagement rate)
 - **Joint statement (by 17 leading European research organisations)** calling on the EC and MS to preserve the bottom-up nature of the Marie Skłodowska-Curie Actions (1,461 impressions & 6% engagement rate)



BlueSky (< 1 year of existence)

- 185 followers | 180 following | 46 posts

Media coverage

- 4 Newsletters (last one to come)
- Science Business (June)
- Just Europe podcast (DG Employment)
- Research Professionals (October)
- News Tank Academic, Education & Research (November)
- Science Business (November)
- INESC The Insider podcast



Coalition for Advancing Research Assessment (CoARA)



EASSH is involved in:

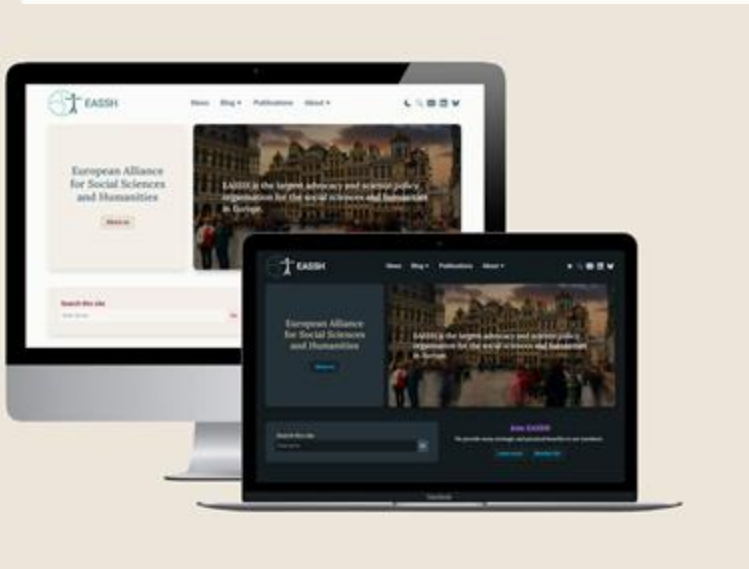
- **Working Group on “Multilingualism** and language biases in research assessment” (represented by the European Language Council)
- **Working Group on "Transdisciplinarity, Applied/Practice-Based Research, and Impact"** (subgroup on social impact)
- **Working Group on “Ethics and Research Integrity Policy** in Responsible Research Assessment for Data and Artificial Intelligence”
- **EASSH co-leads**, with the European Network for Research Evaluation in the SSH (**ENRESSH**) and the Federation of Finnish Learned Societies (TSV) Working Group on **“Evaluating Social Sciences and Humanities research globally”**

CoARA Working Group “Evaluating SSH research globally” – Plan: 5 Task groups

- 1.TG1: Landscape of Action Plans and WGs
- 2.TG2: Theory of evaluation and principles, recommendations and their implementation
- 3.TG3: Review of national evaluation systems
- 4.TG4: Peer review
- 5.Coordination group



Launching a new website



Website redesign

The EASSH website and logo have been redesigned along with an ongoing branding project covering publications and communication materials.

New features:

- Search
- Publications
- Dark mode and phone/tablet design
- Member and partner feeds
- Blog – The EASSH Lens

Future developments

The EASSH lens

This blog is dedicated to learning and research in the social sciences and humanities as a resource for Europe and the world. It is aimed at policymakers and research funders as well as media, societal actors and the public.

We are looking for easily accessible pieces written for a broad audience. If you have an idea for a blog post, please get in touch with a brief outline → nikos.kastrinos@eassh.eu.





**Rasmus Antoft,
Henrik Halkier,
Christian Jantzen**

27 November 2025

**Cultural entrepreneurship in the
face of global challenges: The case
of fashion**

On December 1st and 2nd 2025
there is an EU Presidency
Conference in Copenhagen on
Human Values and Global
Challenges. This conference will
discuss how...

[Read article](#)



Murray Pittock
University of
Glasgow

27 October 2025

**Arts, Humanities, Industry and the
Economy**

Culture and creative industries
are part of the foundation of
Europe's comparative economic
advantages.

[Read article](#)



**Anna
Krzywoszynska**
University of Oulu

27 October 2025

**Why social sciences, humanities,
and the arts matter for soil science**

Mission Soil provides a
transdisciplinary approach to the
health of the land, exploring
factors beyond technology and
natural sciences.

[Read article](#)



Alexander Hasgall
Senior Adviser to
EASSH

27 October 2025

Knowledge Security and SSH

"Knowledge security" has become
central in European politics.
While it is often concerned with
STEM subjects, it has profound
implications for the humanities...

[Read article](#)



**Raise awareness
in your
organisation!**

Philippe Keraudren Mobility Fellowship Call for applications 2026!

For member organisations who would like to work more closely with EASSH

Objectives:

- To provide EASSH members with direct insight into the dynamics of science policy at a European and national level

- To offer EASSH members the opportunity to work closely with the EASSH secretariat and to engage with the "Brussels bubble"

Modalities

- Duration: 6 months to a year

- Location: Brussels

- The fellow will continue to work for their organisation for 50% or a bit more of their time and support the work of EASSH in Brussels for the remainder.

Further information: <https://eassh.eu/Thematic/Calls/Philippe-Keraudren-Mobility-Fellowship>

Part B: Future planning

EASSH plan 2026 and beyond

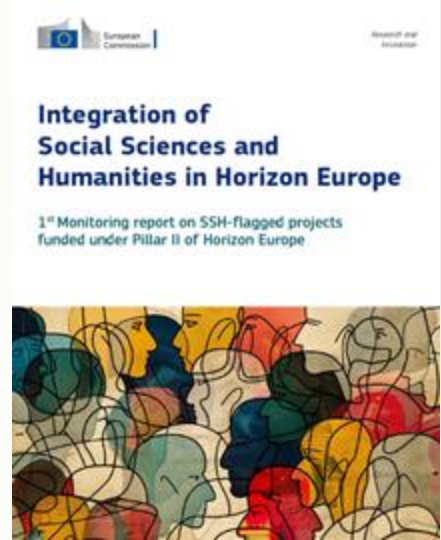
Main commitments for 2026

- ▶ FP10 negotiations
- ▶ Activities for CoARA Working Group “Evaluating SSH research globally” – finalise deliverables
- ▶ European partnerships: SBEP, Brain Health and support to the two SSH partnerships (Social Transformation and Cultural Heritage)
- ▶ ERA Forum
- ▶ EASSH business developments
- ▶ Member-led Workshops and Webinars (eg. SAGE and Taylor & Francis)

SSH integration in Horizon Europe & FP10

Planned activities:

- ▶ Position papers:
 - ▶ SSH integration analysis: EC workshop and methodology (2026)
 - ▶ Societal Readiness – a pilot in Cluster 5 analysis of results
 - ▶ Reimagining Innovation: new metrics
 - ▶ Culture compass critical analysis
- ▶ Events:
 - ▶ STOA event 3 February 2026
 - ▶ CoARA workshop and outputs
 - ▶ Platform for SSH & STEM interdisciplinary research



Call for Action

- EASSH Commissioners and VP of the EC (Ms Zaharieva, Start-up, R&I, Ms Minzatu Executive Vice-President for Social Rights and Skills, Quality Jobs and Preparedness, Ms Virkunnen VP for democracy)
- Target ministries and research councils
- Coordinated action and individual actions
- Be vocal and visible as a community not as individuals
- Coordinate interventions with Ministries (eg. Deans of SSH faculties together; coordinate 3 things to demand)
- Participation at key conference and events
- **Consistency with recommendations in EASSH papers**



ERA Forum: EASSH one of 20 Stakeholders

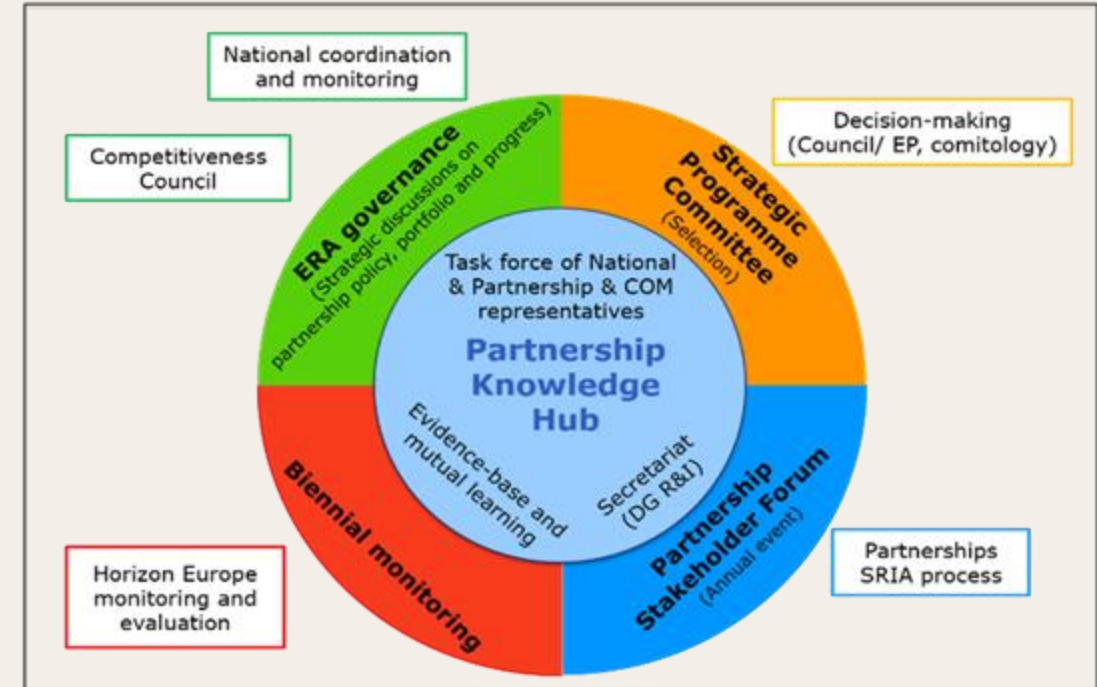
Subgroups EASSH supports/contributes:

- ▶ Global Approach to R&I Cooperation
- ▶ Inclusive Gender Equality in ERA (Erasmus Univ Rotterdam)
- ▶ [Generative AI guidelines](#) (City University London)
- ▶ Career and Academic Freedom task forces
- ▶ **ERA Forum workshop In February (t.b.c.) – topics to be suggested by January 15**

New ERA Act under development with the new European Commission – Response to the Consultation (**23 January 2026**) – Task force for contributions.

European Partnerships

- ▶ Strategic Research and Innovation Agenda (SRIA) for Sustainable Blue Economy Partnerships and Brain Health Partnership
- ▶ Sustainable Blue Economy Partnerships: full partner with specific tasks
- ▶ Partnership Knowledge Hub Forum – Build a portfolio of partnerships
- ▶ EASSH members to contribute to the design of the two SSH-driven partnerships:
 - ▶ Resilient Cultural Heritage
 - ▶ Social Transformation and Resilience (EERA)
- ▶ Other interesting partnerships are:
 - ▶ Virtual worlds
 - ▶ Textile of the future



A Platform for interdisciplinary research (application in progress)

The project has four main objectives:

- Significantly improve the integration of SSH research
- Overview of research programmes (public and private RFOs) to integrate SSH expertise
- Inform science policy makers and funders to promote SSH integration
- Create a data hub (emerging mega-trends in R&I, use of topic and policy relevant taxonomies)

EASSH business developments (still pending)

- ▶ A new office
- ▶ Open opportunities to hire in Belgium – administrative changes
- ▶ Update of financial regulations and statutes
- ▶ Increase capacity – human resources and contributions



Thank you to all our members!

Acknowledgements:

*A special thank you to Compagnia San Paolo,
NTNU, Taylor & Francis, SAGE, and Bergen
University for supporting the EASSH mission.*